

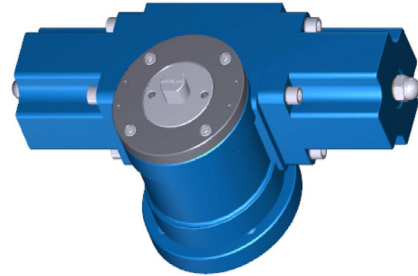
# Hydraulic Actuator Double Acting

AVA. HD Series

## Hydraulic actuator double acting

### Technical Data

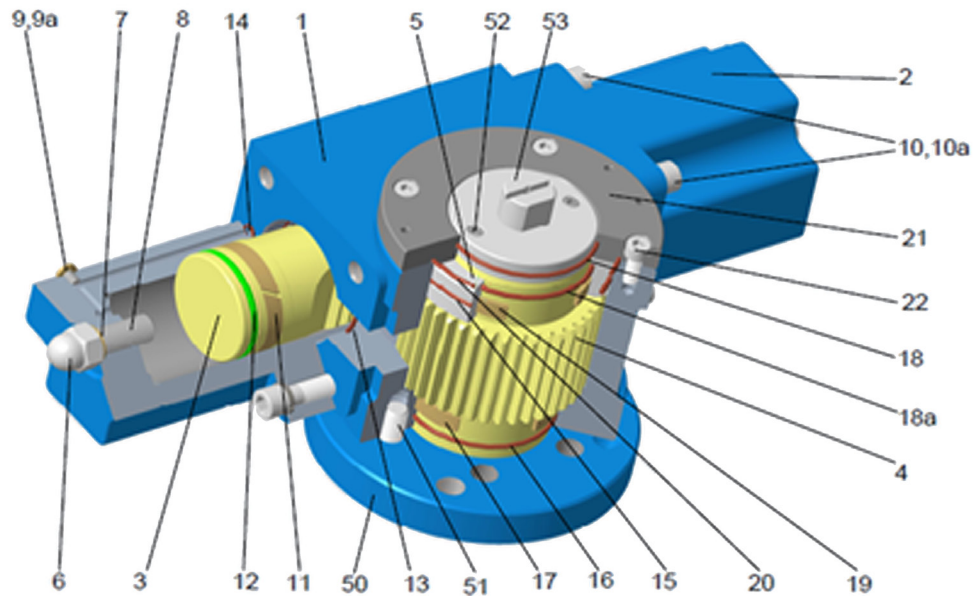
- Rotation:  $90^\circ \pm 5$
- Closing direction: Clockwise as default
- Dry mounting coating:
  - Epoxy primer: 40+ micron
  - Epoxy top: 40+ micron
  - Total film thickness: 80 micron or above
- Submerged mounting coating
  - Primer: 1x50 with inorganiz zinc ethyl silicate
  - Intermediate: 3x50 with epoxy-polyamide intermediate-finish
  - Top coat: 1x50 with polyurethane polyester-isocyanate finish
  - Total film thickness: 250micron or above
- Male stud coupling: OD8 or OD10
- The AVA HD series actuators are designed for pipe connection to the G1/4 actuator port. The control block would be on the actuator according to the applications.



### Highlights

- Unique and simple design
- Less footprint, less weight and lower maintenance required
- Local position indication available
- Easy mounted to all quarter-turn valves
- Any position mounting from horizon to vertical
- Satisfies all requirements by major class societies
- Suit dry or submerged mounting

# Hydraulic actuator double acting

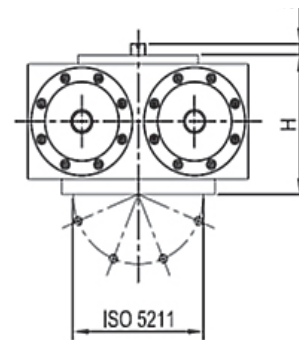
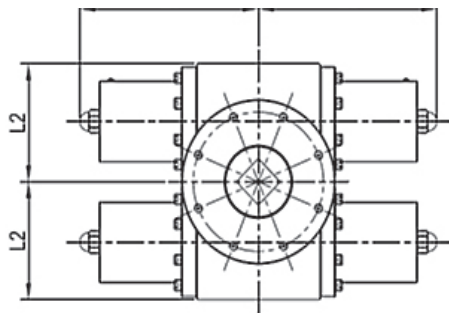
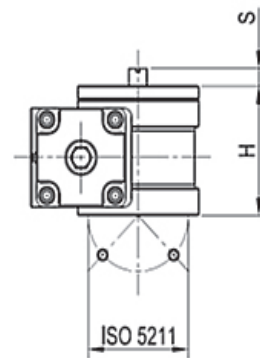
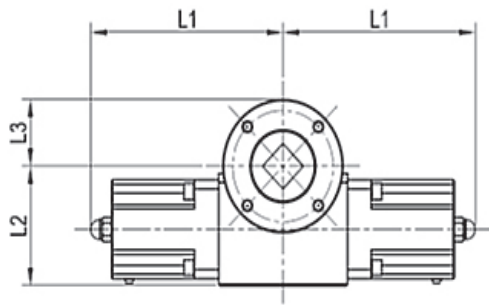


O	K	T	No	Description	Material	Quantity
			1	Body	Ductile Iron GGG45	1
		T	2	End Cap	Steel C45	2
		T	3	Piston Rack	Alloy Steel 41Cr4	1
			4	Pinion	Alloy Steel 41Cr4	1
			5	Pinion Cap	Alloy Steel 41Cr4	1
			6	Adjustment Cap	SUS316	2
K			7	Bleed Nut	POM	2
			8	Adjustment Screw	Steel 12.9	2
		T	9	Bleed Screw	SUS316	2
K	T		9a	Flat Washer	POM	2
		T	10	Endcap Screw	Steel 12.9	8
		T	10a	Spring Washer	65Mn	8
K	T		11	Guide Ring	CDSTEX	2
K	T		12	Piston Seal	Reinforced	2
K	T		13	O Ring	NBR	2
K	T		14	O Ring	NBR	2
K			15	O Ring	NBR	1

O	K	T	No	Description	Material	Quantity
K			16	O Ring	NBR	1
K			17	Guide Ring	CDSTEX	1
K			18	O Ring	NBR	1
K			18a	O Ring	NBR	1
K			19	Guide Ring	CDSTEX	1
K			20	O Ring	NBR	1
			21	Upper Flange	Steel C45	1
			22	Flange Screw	SUS316	1
O			50	Middle Flange	Steel C45	1
O			51	Middle Flange Screw	Steel 12.9	6
O			52	Indicator Cover Screw	SUS316	4
O			53	Indicator Cover	Steel C45	1

O	The item is different in different application such as dry or submerged installation.				
K	Spare kit parts to be renewed each overhaul maintenance				
T	The quantity would be double in AVA.HD160 and HD200 which				

# Hydraulic actuator double acting



Actuator	Torque <sup>2)</sup>	Volumn	L1	L2	L3	H	S	Flange	Weight
Type	[Nm]	[cm <sup>3</sup> ]	[mm]	[mm]	[mm]	[mm]	[mm]	ISO 5211	[kg]
AVA.HD28	201	29	170	85	45	110	20	F05/F07	10
AVA.HD40	411	59	175	85	45	110	20	F07/F10* <sup>1)</sup>	13.5
AVA.HD50	643	93	180	85	45	110	20	F10*/F12*	18
AVA.HD63	1630	245	239	134	75	145	20	F12/F14*	40
AVA.HD80	2740	395	261	134	75	145	20	F14*/F16*	55
AVA.HD100	4717	678	296	160	88	166	20	F16*/F25*	80
AVA.HD160	8780	1262	338	190	/	234	20	F25*/F30*	200
AVA.HD200	13720	1972	348	215	/	254	20	F25*/F30*	280

1) Flange with mark\* achieved by middle flange (pn 50)

2) The torque value on working pressure 11.5Mpa

# Hydraulic actuator double acting

A V A .   XXX

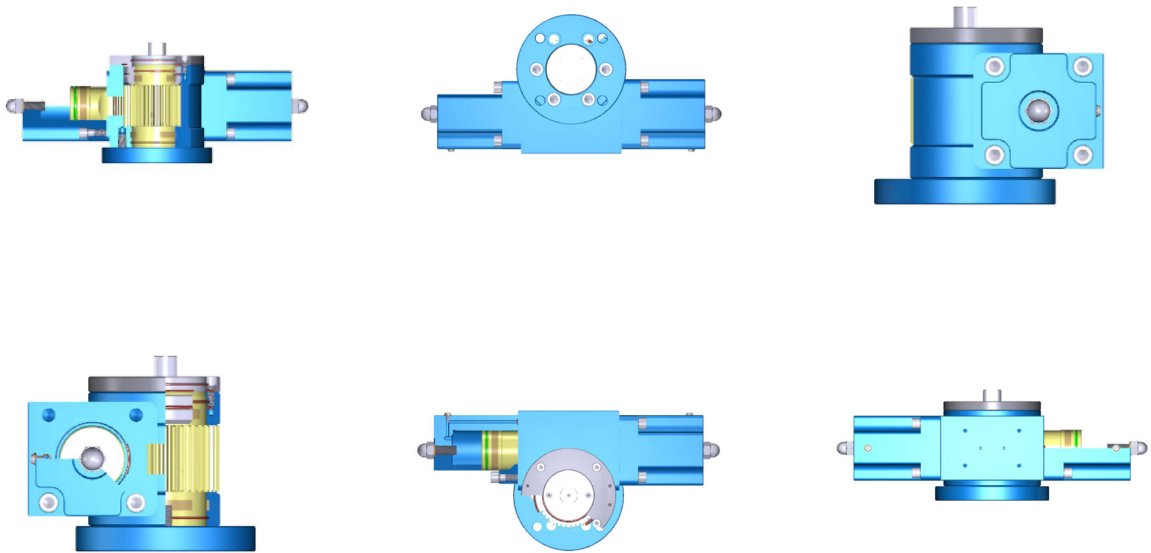
Hydraulic Part Turn	H
Hydraulic Linear	L
Electro-hydraulic	T
Electric	E

Double Acting	D
Single Acting	S

Cylinder Diameter 28mm	28
Cylinder Diameter 40mm	40
Cylinder Diameter 50mm	50
Cylinder Diameter 63mm	63
Cylinder Diameter 80mm	80
Cylinder Diameter 100mm	100
Cylinder Diameter 80mm x4	160
Cylinder Diameter 100mm x4	200

Dry Installation	D
Submerged Installation	W

With mechanical indication on top of actuator







## With state-of-the-art technology we bring efficiency to our customers

API Marine is a house of competence, where development, design and production processes are united in unique solutions for advanced tank control. Complete liquid cargo control systems can be supplied – from sensors in the tank and operators' stations to the calculation software, all fulfilling IMO requirements. API Marine is certified according to ISO 9001:2015 and our products carry the ATEX PQAN approval.

We want to contribute to our customer's profitability by supplying high quality products, excellent service and state-of-the-art high-tech solutions, where reliability and durability are keywords!

